

Diversity of Life

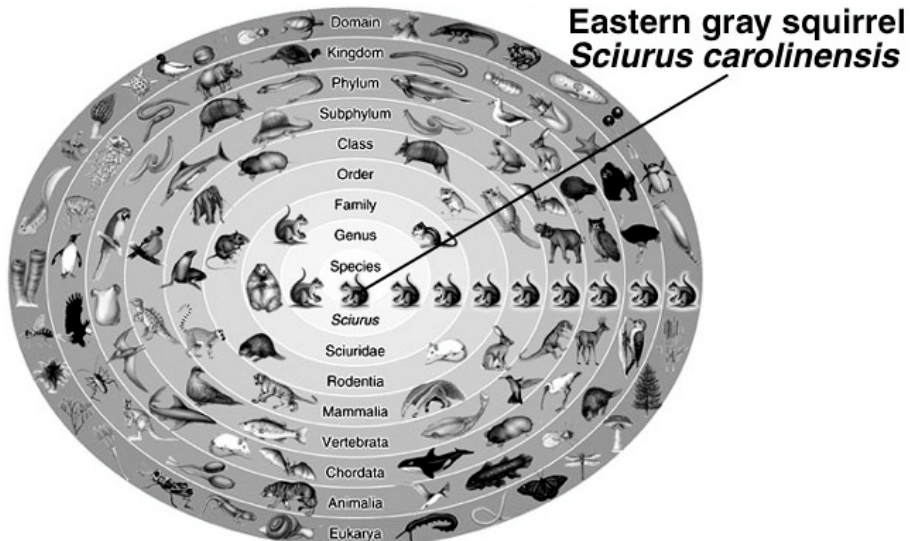
Classification - an organized scheme for grouping organisms
- a tool for communication -

Hierarchical - a series of successive and inclusive rankings

- Domain - the highest rank - contains one or more kingdoms
- Kingdom - contains one or more phyla
- Phylum - contains one or more classes
- Class - contains one or more orders
- Order - contains one or more families
- Family - contains one or more genera
- Genus - contains one or more species
- Species - a group of potentially interbreeding organisms that are reproductively isolated from all other organisms

Copyright © The McGraw-Hill Companies, Inc. Permission required for reproduction or display.

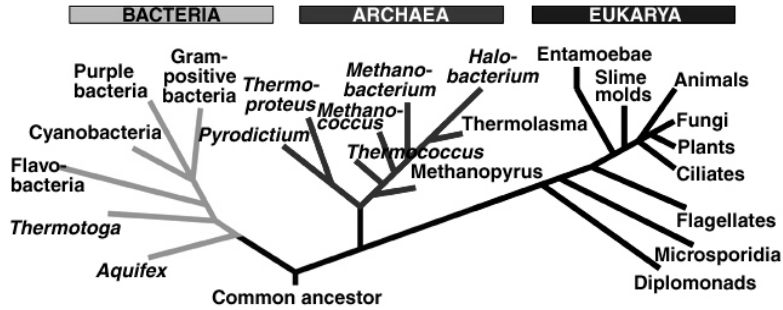
Hierarchical System of Organism Classification



Hierarchies can be represented as trees:

Copyright © The McGraw-Hill Companies, Inc. Permission required for reproduction or display.

Tree of Life

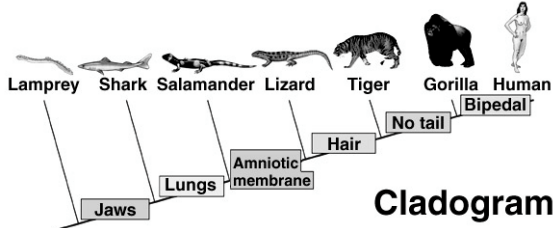


Trees and classifications can be based on estimates of evolutionary relatedness.

The modern method bases estimates on shared derived characteristics (synapomorphies).

Copyright © The McGraw-Hill Companies, Inc. Permission required for reproduction or display.

Traits: Organism	Jaws	Lungs	Amniotic membrane	Hair	No tail	Bipedal
Lamprey	0	0	0	0	0	0
Shark	1	0	0	0	0	0
Salamander	1	1	0	0	0	0
Lizard	1	1	1	0	0	0
Tiger	1	1	1	1	0	0
Gorilla	1	1	1	1	1	0
Human	1	1	1	1	1	1



Cladogram

This method assumes that complex characteristics evolve rarely. Thus, the presence of characteristics like amniotic development or lungs is an indication of descent from the original species that possessed them.

A tree that represents an estimate (hypothesis) of evolutionary relatedness is called a phylogeny

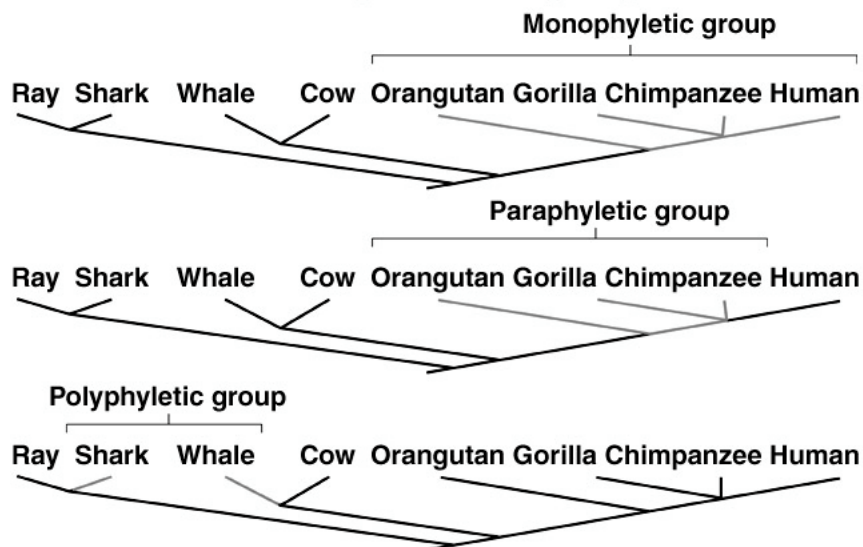
Classifications can be based on groupings within a phylogeny

Groupings can be categorized

- monophyletic - a group that includes all of the descendants of a single common ancestor
- paraphyletic - a group that includes some, but not all, of the descendants of a single common ancestor
- polyphyletic - a group that is not based on common ancestry

Copyright © The McGraw-Hill Companies, Inc. Permission required for reproduction or display.

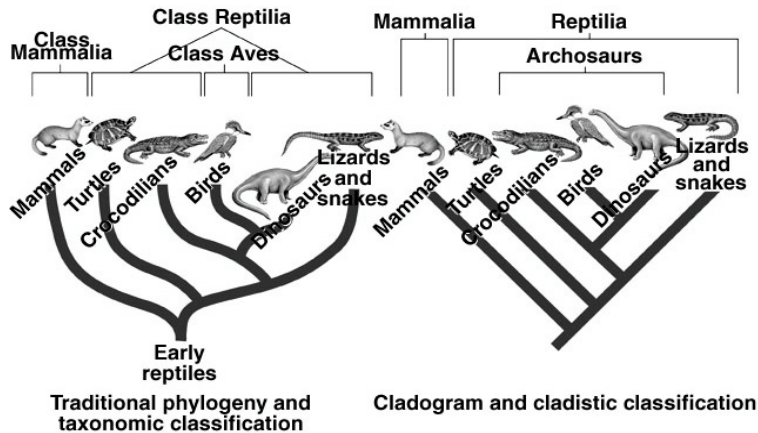
Three Groups of Phylogenies



The trend in modern classification is to create cladistic classifications. Cladistic classifications include only monophyletic groups. Some rearrangements of long-established groups will result:

Copyright © The McGraw-Hill Companies, Inc. Permission required for reproduction or display.

Traditional Versus Cladistic Classification



Classifications through time:

Copyright © The McGraw-Hill Companies, Inc. Permission required for reproduction or display.

Approaches to Classifying Organisms

A two-kingdom system—Linnaeus



A five-kingdom system—Whittaker



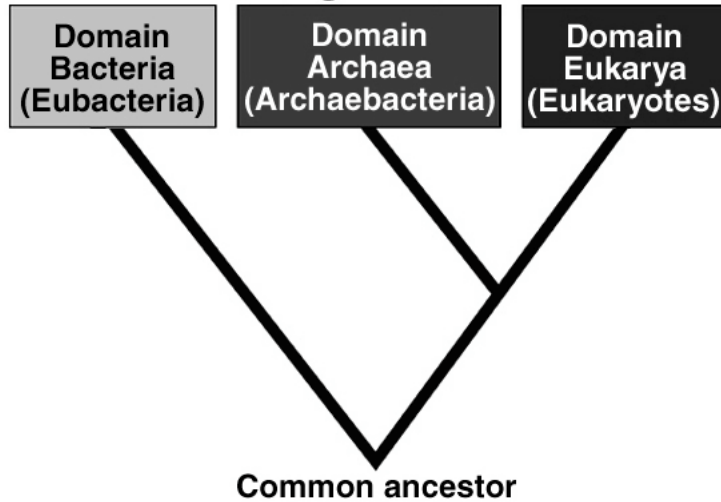
A six-kingdom system—Woese



A three-domain system—Woese



Evolutionary Relationships Among Domains



Bacteria and Archaeans are both prokaryotic:

- generally small and simple,
- lacking membrane bound organelles,
- no nuclear membrane,
- if present, flagella consist of a single fiber,
- genetic recombination occurs through
 - transformation, conjugation, or transduction

Bacteria and Archeans differ

- First amino acid in protein synthesis
- presence of introns in genes
- membrane lipid structure
- number of RNA polymerases
- peptidoglycan in cell wall
- response to some antibiotics

Bacteria

f-Met
No
unbranched
one
yes
sensitive

Archaea

Met
some
branched
several
no
insensitive

Bacteria

- source of many diseases in plants, fungi, and animals
- some are photosynthetic - purple sulfur bacteria, cyanobacteria
- some are anaerobes
- important decomposers in every habitat on earth

Archaea

- many obligate anaerobes
- many live in extreme environments (extremophiles)
 - thermophiles
 - halophiles
 - methanogens

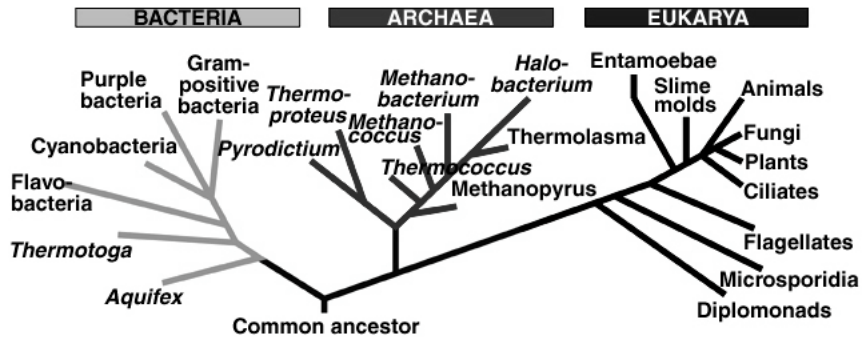
Archaeans share many characteristics with the Eukarya

- First amino acid is Met
- Genes with introns
- Several RNA polymerases
- Lack peptidoglycan in cell wall
- Insensitive to antibiotics

Table 32.1 Features of the Domains of Life

Feature	Domain		
	Archaea	Bacteria	Eukarya
Amino acid that initiates protein synthesis	Methionine	Formyl-methionine	Methionine
Introns	Present in some genes	Absent	Present
Membrane-bounded organelles	Absent	Absent	Present
Membrane lipid structure	Branched	Unbranched	Unbranched
Nuclear envelope	Absent	Absent	Present
Number of different RNA polymerases	Several	One	Several
Peptidoglycan in cell wall	Absent	Present	Absent
Response to the antibiotics streptomycin and chloramphenicol	Growth not inhibited	Growth inhibited	Growth not inhibited

Tree of Life



Domain Eukarya - consists of four kingdoms

Kingdom Protista - diverse single celled organisms -
some colonial or with primitive multicellularity
nutritionally diverse -
autotrophic - photosynthetic
heterotrophic - both saprobes and ingesters

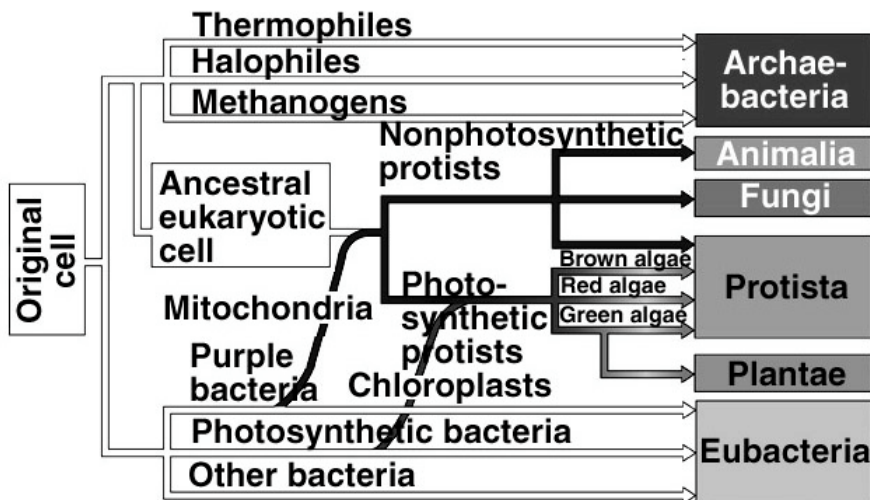
Kingdom Fungi - mushrooms, rusts, molds, etc. -
multicellular
saprobes - use extracellular digestion
cell walls made of chitin
immobile

Kingdom Plantae - plants
multicellular, cell walls made of cellulose
photosynthetic using chlorophyll a & b
immobile

Kingdom Animalia - animals
multicellular
lack cell walls
usually mobile
heterotrophic ingesters

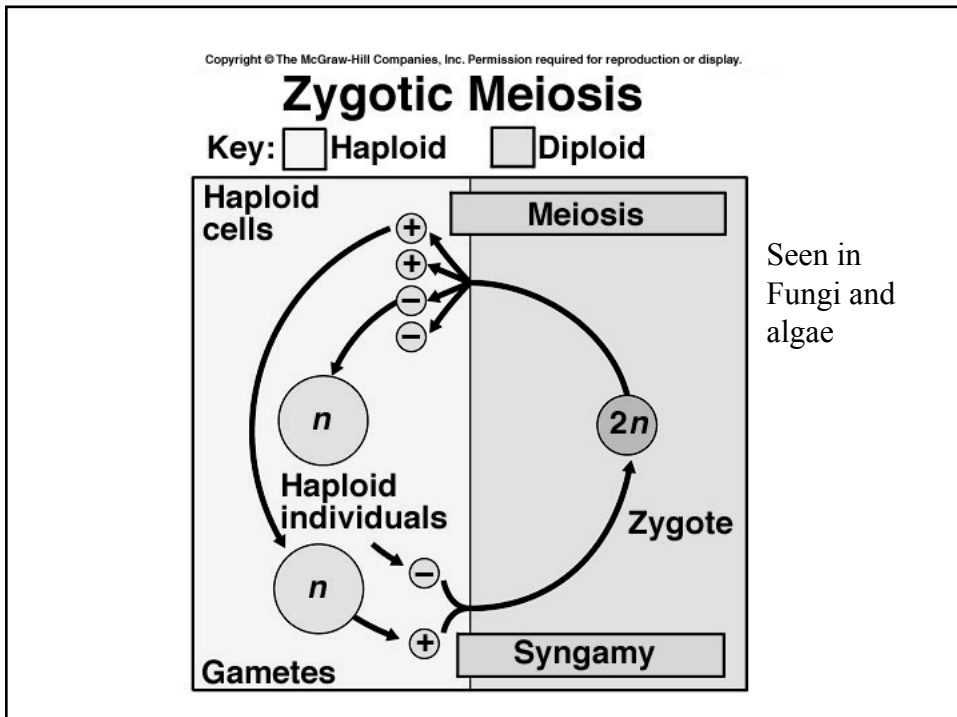
Copyright © The McGraw-Hill Companies, Inc. Permission required for reproduction or display.

Evolutionary Relationships Among Kingdoms



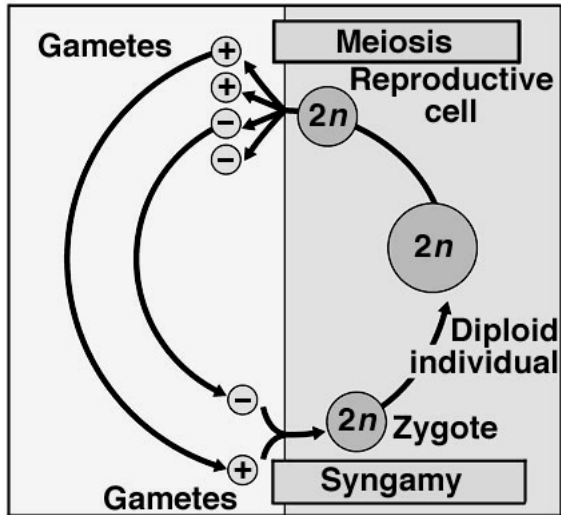
Sex is the hallmark of the Eukarya

- the combination of genetic information from two different sources - through syngamy
- life cycle consists of both a diploid stage and a haploid stage
- either stage may be multicellular or single celled



Gametic Meiosis

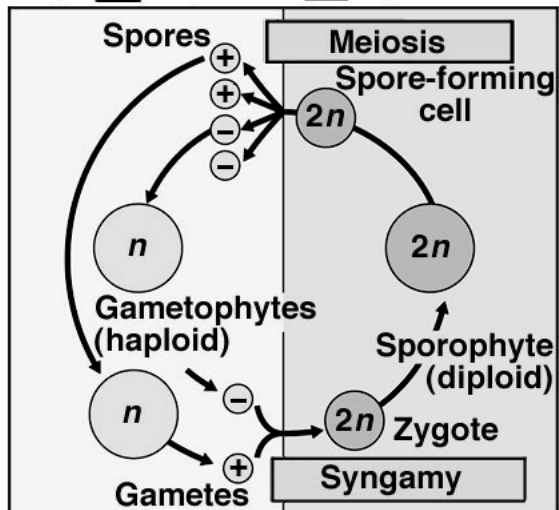
Key: Haploid Diploid



Seen in
Animals

Sporic Meiosis

Key: Haploid Diploid



Seen in
plants
and
some
fungi