

## Campus unveils Geospatial Technology Center

Geomatics students and professionals – and regional government agencies – will gain a new resource this year at Nicholls.

The Geospatial Technology Center, featuring 25 high-end computer workstations, a high-definition



Dr. Balaji Ramachandran, assistant professor of geomatics, displays an unmanned aerial mapping vehicle – one of the features of the new Geospatial Technology Center.

projection system, four terabytes of server capacity, a high-speed interconnection to the Louisiana Optical Network Initiative, an unmanned aerial mapping vehicle and several GPS mapping units, opened Friday, Feb. 13, on the first floor of

Ellender Memorial Library.

“The new technology will provide students with hands-on experience in real-world applications, and professionals will be rewarded with a one-stop research outlet,”

See **Geomatics**, page 2

## Guests needed to promote Nicholls on HTV-10

In May 2008, Nicholls launched a weekly, 15-minute television broadcast on HTV-10 in Houma. Publicizing the best of what the university has to offer to a wide audience, the broadcast has featured dozens of administrators, faculty, staff and students who have volunteered their time to inform viewers of the many programs, events and issues pertinent to Nicholls.

The Office of University Rela-



tions, which co-produces the program, is now requesting volunteers for spring 2009 and beyond. Members of the Nicholls family who are interested in appearing on the broadcast

are encouraged to contact Graham Harvey, writer/media relations specialist, at [graham.harvey@nicholls.edu](mailto:graham.harvey@nicholls.edu).

“In light of the current budget See **Guests Needed**, page 7

## 11th annual Jubilee to kick off March 12

The 11th annual edition of Jubilee: A Festival of the Arts and Humanities at Nicholls, is scheduled for March 12 – April 23. Jubilee takes place every spring to raise the level of awareness in the arts and humanities for the Nicholls community and the southeast region of Louisiana.

Jubilee includes dozens of events in the categories of art, cuisine, history, literature, music, performing arts and Cajun culture.

Artists and presenters come to Thibodaux from across the South, the nation and other parts of the world, including Kenya and South Korea.

Among those scheduled for this year’s Jubilee are Spencer Bohren, a musician who shares the traditional music of the South; C.C. Lockwood, a noted photographer of Louisiana; Darrell Bourque, a poet affiliated with the University of Louisiana at Lafayette; and Jeffrey Siegel, a solo pianist with orchestras

around the world.

The festival began in 1998 as part of the university’s 50th anniversary

celebration and has become an annual tradition that draws thousands of locals, tourists and academics to share in the arts and humanities.

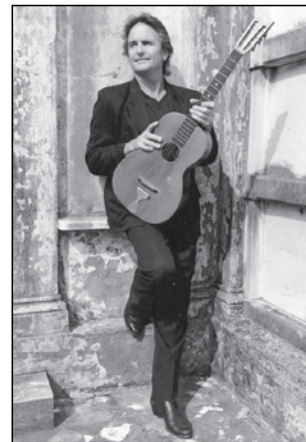
Jubilee strives to educate the Nicholls student body, faculty, staff and members of the surrounding communities on matters of interest

to the arts and humanities. It also furnishes role models by presenting locally and nationally distinguished lecturers and performers.

Professor Angela Hammerli is the coordinator of Jubilee. She is a distinguished service professor of education, the Orleans Pitre endowed professor and an associate professor of human performance education.

“It sparks my life to see such a variety of entertainers and the ways their performances

See **Jubilee**, page 5



Bohren



Lockwood

## Skeet-shooting for scholarships



Dr. David Boudreaux, vice president for institutional advancement, fires at a clay during the first Colonel Skeet Shoot tournament – conducted Saturday, Feb. 7, at Tri-Parish Sporting Clays in Bayou Blue. Funds raised at the event will benefit student-athlete scholarships.

## Geomatics, continued from page 1

said Dr. Balaji Ramachandran, assistant professor of geomatics.

Funded with competitive grants totaling approximately \$625,000, the equipment will allow students to input geographic information systems data to a server, resulting in a data clearinghouse for the entire state of Louisiana.

“Such a resource is ideal for researchers interested in coastal restoration; emergency responses and preparedness; and offshore solutions to petroleum industries,” Ramachandran said. “One of our top goals is to provide geospatial technological solutions to regional government agencies.”

Moreover, initial testing of the program’s unmanned aerial mapping vehicle could happen as early as March – over Louisiana’s barrier islands, Ramachandran said.

“We only require the approval of the Federal Aviation Administration to move forward,” he said.

Currently in its sixth year at Nicholls, the geomatics program is designed to provide college-level preparation that meets the educational requirements for registration as a professional land surveyor in Louisiana. To date, the Louisiana Society of Professional Surveyors has donated around \$140,000 to the geomatics program for surveying equipment, recruitment efforts, matching funds for grants and student scholarships.

With around 50 students, the program offers the only bachelor’s degree in surveying and mapping in the state.

For additional information on the geomatics program, call Ext. 4692 or go to [www.nicholls.edu/doas/degree-programs/geomatics/](http://www.nicholls.edu/doas/degree-programs/geomatics/).

## FROM THE DESK OF THE PRESIDENT

Dear Nicholls family,

The University of Louisiana System office submitted its 2009-2010 proposed budget reduction working document and those of its eight member institutions to the Division of Administration on Monday, Feb. 9. I want to give the Nicholls campus a summary of the working document submitted to the University of Louisiana System.

As instructed by the Jindal administration, Nicholls created two scenarios – one detailing the impact of a 15.8-percent or \$4.7 million budget reduction and the other detailing the impact of a 28.5-percent or \$8.6 million budget reduction.

Either would have a devastating impact on Nicholls and everyone it serves. Obviously, programs and personnel would be affected immediately should these situations occur, and we can only begin to try to project the long-term effect not just on students, but on the entire region served by Nicholls.

The working document outlines the worst-case scenario, a 28.5-percent budget reduction that would result in the elimination of 17 academic programs, two student service centers and four academic support services. Reductions would be made to four academic services, six support services and 11 operational/administrative support services. A total of 123 employees would be affected: 45 faculty, 37 unclassified staff and 41 classified staff.

The working document also outlines the 15.8-percent budget reduction that would result in the elimination of eight academic programs, one student service center and one academic support service. Reductions would be made to three academic programs, two academic services, three support services, one student service center and nine operational/administrative support services. A total of 58 employees would be affected: 23 faculty, 15 unclassified staff and 20 classified staff.

We must keep in mind that this was created and compiled hastily to meet the criteria requested by the Jindal administration, and any implementation of a budget cut at any level will require much thought, planning and input from interested parties before being finalized. When all is said and done, it is not likely that what we have submitted will become reality.

I want to caution students, faculty and staff from “jumping to conclusions” prior to any actual action that may be taken. Again, no actions of any kind have been finalized, nor will they be, before involving the Nicholls community.

I will continue to keep you informed as events occur.

Sincerely,

Stephen T. Hulbert  
President



## Carnival parking policies announced



Mardi Gras visitors to Thibodaux will be allowed to park on the Nicholls campus in parking lots along Audubon Drive, with few restrictions. Please note, campers will be allowed in the parking lot on the corner of Audubon and Ardoyne Drive, across from Gouaux Hall.

University Police asks that parade-goers adhere to normal parking courtesies, such as observing handicapped zones, no parking zones and reserved parking spaces as some Nicholls employees work after normal business hours.

Additional restrictions follow:

- No parking will be permitted on grassy

areas or beyond any concrete headers.

- All tailgating must end by 11 p.m.
- Visitors may not use any university restroom facilities or utilities.
- Underage drinking will not be permitted on Nicholls property.

Visitors planning to park overnight will be allowed to do so between 3 p.m. Friday, Feb. 13, and 10 p.m. Sunday, Feb. 15 – and between 3 p.m. Friday, Feb. 20, and 10 p.m. Sunday, Feb. 22.

All university buildings will be closed to the public during parade times. Nicholls is officially closed Monday, Feb. 23 and Tuesday, Feb. 24, but the above restrictions will be enforced by University Police throughout the 2009 carnival season.

## In the Kitchen

### Rocky Road Chocolate Cake



- 1 package of German chocolate cake mix
- 1 - 3.9 oz. package of chocolate instant pudding
- 3 large eggs, lightly beaten
- 1 cup sour cream
- 1/3 cup butter, melted
- 1 1/2 tsp. pure vanilla extract
- 3 1/2 cups milk, divided
- 1 - 3.4 oz. package chocolate, cook-and-serve pudding mix
- 3/4 cup chopped pecans
- 2 cups miniature marshmallows
- 1 cup semisweet chocolate morsels
- vanilla ice cream (optional)

Beat cake mix with next 5 ingredients, and 1-1/4 cups of the milk at medium speed for 2 minutes. Pour batter into a lightly greased 4-qt. slow cooker. Cook remaining 2 cups of milk in a heavy saucepan over medium heat, stirring often, for 3-5 minutes or until bubbles appear. (Do not boil.) Remove from heat. Sprinkle cook-and-serve pudding mix over batter. Slowly pour hot milk over pudding. Cover and cook on low for 3 1/2 hours. Meanwhile, heat pecans in a small non-stick skillet, 3-5 minutes or until lightly roasted. Turn off slow cooker. Sprinkle cake with pecans, marshmallows and chocolate morsels. Let stand for 15 minutes or until marshmallows are slightly melted. Spoon into dessert dishes and serve with ice cream, if desired. The cake will look like it needs to cook longer, but it will set after it stands for 15 minutes.

*Have a favorite recipe you'd like to share with Nicholls faculty and staff? Send it to [graham.harvey@nicholls.edu](mailto:graham.harvey@nicholls.edu).*

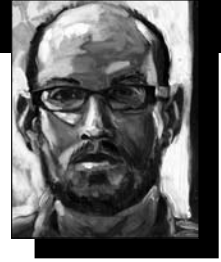
## Welcome Back Day engages campus, community



The College of Business Administration's second annual Welcome Back Day – conducted Tuesday, Jan. 27 – allowed students to network with faculty, staff, community members and each other. On-hand to answer students' questions were representatives of the Office of Career Services, Office of Financial Aid, Counseling Center, Finance Club and Delta Sigma Pi. Sponsors included Papa John's, Coca-Cola, Buquet Distributing, CrossFit Houma, the Nicholls bookstore, Sam's Club and Wal-Mart.

## Focus on ...

### Ross Jahnke



#### Associate Professor of Art

##### What is your hometown?

I was actually born in Cedarburg, Wis., but I live in Baton Rouge with my wife and three children.

##### What's your educational background?

I have a Bachelor of Fine Arts from the University of Wisconsin-Milwaukee and a Master of Fine Arts from LSU.

##### What kind of artist are you?

I'm a painter and a printmaker.

##### Do you have hobbies?

Yeah, I do. I haven't been very active competitively, but I fly model airplanes. There are three of us in Louisiana that fly international class model airplanes – free-flight models that are not controlled by wires or radios.

##### How long have you worked at Nicholls?

I've been here since 1993.

##### What brought you to Nicholls?

A job. There was a one-year replacement position available in 1993, and I filled it. Once that year was up, I was hired back as a full-time instructor and the rest is history.

##### What are some of the most rewarding aspects of your job?

The art department is a great place to work. This job really suits me, because I enjoy teaching. I've worked on both sides of the art world. I've worked in art galleries helping artists display their work, and I've worked with students helping them create their work. It's much more fun being on the creative side – teaching the students to be creative. I'm really concerned with teaching well and trying to improve my teaching.

##### What professional accomplishment at Nicholls are you most proud of?

I received grant money in the mid-1990s to develop a paper-making studio at Nicholls, and we are now able offer paper-making classes for our students. We were the first university in the state to offer such classes, and I'm very proud of that.



## Coffee with the President

Tuesday, Feb. 17

2-4 p.m.

Captain's Room, Bollinger Memorial Student Union

Call Dr. Ray Giguette at Ext. 4396 to RSVP.



# BEHIND THE NAME

## Beauregard, Polk Halls honor Civil War generals

*(Editor's Note: At the request of Inside, Dr. Alfred Delahaye, professor emeritus of journalism, has written a series of articles on how and why campus buildings got their names. The third appears below.)*

Beauregard Hall, which opened in 1961 as a science building, was named for Pierre Gustave Toutant Beauregard because he was an engineer and "scientific." And Polk Hall, which opened as a library in 1965, was named for Episcopal Bishop Leonidas Polk, because he was "a man of letters." Both were graduates of West Point and Civil War generals.

In proposing those names, President Charles C. Elkins was influenced by Charles J. Perilloux, state supervisor of college plants (LSU excepted). Perilloux was a history buff who favored Nicholls over its sister institutions, arguing that Nicholls had the greatest needs. "It is fitting and proper," Elkins wrote, "that the buildings on the campus be named in honor of those persons from this region who were associated with Gov. Nicholls and the history of this area."

Beauregard was born May 28, 1818, in St. Bernard Parish. He ranked second in his West Point graduating class of 1838. He served as an engineer on the staff of Gen. Winfield Scott in the Mexican War and was twice wounded.

He was superintendent of West Point, but only briefly, because he resigned to become a brigadier general in the Confederate army. He made history by ordering the bombardment of Fort Sumter on April 12, 1861.

Pulitzer Prize-winning historian T. Harry Williams, who produced

two volumes on Beauregard in the 1950s, credited Beauregard for improving the South after the war: "He helped to destroy the old agrarian way and to build the New – the industrial – South."

After the war Beauregard declined military-command offers from European countries and became an influential figure in Louisiana affairs. His activities included service in the Corps of Engineers in Louisiana and an unsuccessful run for mayor of New Orleans.



Beauregard



Polk

He was so highly regarded that Beauregard Parish was named for him as was Camp Beauregard near Alexandria where thousands of soldiers trained in World Wars I and II. He died in 1893 and was interred in Metairie. Students in 1962 hung a black and white portrait of Beauregard in the building's biggest room, 135; before renovations began, the picture was placed in university archives.

As for Polk, he was born in Raleigh, N.C., in 1806. He became a West Point graduate in

1827 and an ordained Episcopal priest in 1831. Ten years later he was the first bishop of Louisiana. He operated Leighton Plantation near Thibodaux from 1842 to 1854, and on March 16, 1845, consecrated St. John's Church in Thibodaux. He also founded churches in Houma and Napoleonville.

In 1860 he was instrumental in establishing the University of the South at Sewanee, Tenn. Pleased to learn that Nicholls had named its library for Polk, the Tennessee institution donated to the library a large oil painting of Polk in his clerical garments. It hangs today, not in Polk Hall but in Ellender archives.

## Rotary scholarship established for local high school graduates



The Thibodaux Rotary Club donated \$2,000 in scholarship funds to Nicholls on Tuesday, Jan. 27. One graduate from Thibodaux High School and one graduate from E. D. White Catholic High School will receive \$1,000 each. Pictured from left are Michael Matherne, director of campus recreation and president of the Thibodaux Rotary Club; Dr. Laynie Barrilleaux, assistant vice president for academic affairs and president-elect of the Thibodaux Rotary Club; and Dr. Stephen T. Hulbert, university president

## With a Little Help from Friends ...

### Campus fitness activities can benefit everyone

*By Dr. Ernest Ellender, assistant director of University Counseling Center*

We need your help! Now that the spring semester is in full swing, it's time to get students, faculty and staff working towards their fitness goals and whole-body health. We are looking for anyone interested in offering workouts and health/fitness-oriented activities to the Nicholls community.

If you enjoy activities like dance, aerobics, cardio kickboxing, nutrition, weightlifting, calisthenics, Tae Bo or Body Pump – and you'd like to take a shot at instructing – then e-mail me and we can talk about the specifics. Classes can be offered weekly, monthly or as a one-time activity – whatever you would enjoy contributing.

Moreover, this will be the third semester of the I Am Worth It Program. Because of its previous success and enthusiastic participation, we are looking to expand the program. This semester we will be marketing these activities more aggressively, so we expect attendance to increase yet again.

Please help us offer more variety and opportunities for the Nicholls community to get moving and get active!

Classes already scheduled for the spring semester include:

- **Yoga**

Location: Shaver Gym Dance Studio

Time and Date: Noon on Wednesdays – Feb. 18 and March 4, 11, 18 and 25

- **Crossfit**

Location: Shaver Gym Dance Studio

Time and Date: 11:50 a.m.–12:40 p.m. Mondays – Feb. 9 to April 27

- **Evening Strolls**

Location: Begins in front of University Health Services, Ayo Hall

Time and Date: 4:45 p.m. Tuesdays, Wednesdays and Thursdays (weather permitting)

For more information, call Ext. 4766 or send an e-mail to [ernest.ellender@nicholls.edu](mailto:ernest.ellender@nicholls.edu). Thanks in advance!

## Jubilee, continued from page 1

enhance the audiences,” Hammerli said.

Following are some highlights of the 2009 edition of Jubilee:

New Orleans musician **Spencer Bohren** performs on Sunday, March 15, in the Bollinger Memorial Student Union. Bohren’s music resonates with the ambience of

ture. Experts scheduled to appear include: **Bruce “Sunpie” Barnes**, a French-speaking musician; **David Cheramie**, the president of Council for Development of French in Louisiana; **Nathalie Dajko**, a specialist in Lafourche Parish French; **Rocky McKeon**, a Cajun French teacher; **Bani Ningbinnin**, a francophone music teacher; and **Loulan J. Pitre Sr.**, a storyteller.

**Singers of United Lands—S. O. U. L. .**, performing Wednesday–Friday, March 18–20, involves four singers from Chile, Kenya, Latvia and South Korea



Steve Riley and the Mamou Playboys

the rivers, roads and bayous of the South. From topical songs to energetic highway tunes to beautiful ballads, Bohren presents a wide range of music using an ever-changing assortment of vintage guitars, lap steels and banjos.

The **Louisiana Swamp Stomp Festival**, slated for Friday and Saturday, March 20–21, is a two-day celebration of south Louisiana culture with two stages on the Nicholls campus featuring accomplished musicians performing traditional Cajun music, fiddle tunes, reels and zydeco, the soulful dance music of south Louisiana. **Steve Riley and the Mamou Playboys** are among the acts scheduled to perform.

**French and Local Heritage Day**, scheduled for Friday, March 27, explores many of the reasons why French is not a foreign language in Louisiana. Music by the Cajun rock band **Mellowberry** and a petting zoo are on the day’s schedule, along with presentations by experts on Louisiana cul-

ture. Experts scheduled to appear include: **Bruce “Sunpie” Barnes**, a French-speaking musician; **David Cheramie**, the president of Council for Development of French in Louisiana; **Nathalie Dajko**, a specialist in Lafourche Parish French; **Rocky McKeon**, a Cajun French teacher; **Bani Ningbinnin**, a francophone music teacher; and **Loulan J. Pitre Sr.**, a storyteller.

who are embarking on a six-month tour of the United States. They offer workshops, presentations and lessons featuring the languages, cultures and songs of their native countries.

The **Nicholls Players** present “Arsenic and Old Lace” by Joseph Kesselring, directed by Dr. Stanley Coleman, from Thursday–Sunday, March 19–22. A combination of the farcical and the macabre, this play centers on two elderly sisters who are famous in their Brooklyn neighborhood for their numerous acts of charity. A post-performance reception sponsored by the Nicholls Student Programming Association takes place on opening night, Thursday, March 19.

**Research Week**, Monday–Friday, March 23–27, is always a major part of the Jubilee festival schedule. Faculty and students reveal the results of their latest research projects at locations across campus. A reception on Friday, March 27, caps the week.

The **Faculty Invitational Art**

## Nominations sought for Honorary Doctorate

The Nicholls administration encourages employees, students and alumni to submit nominations for the award of Honorary Doctorate.

The highest form of recognition offered by Nicholls, the Honorary Doctorate is awarded for demonstrated excellence in the fields of public affairs, arts, sciences, humanities, business and philanthropy. Recipients of the degree must be distinguished, with achievements both relevant and appropriate to the university.

Eligibility is restricted to persons of state, national or international stature. Nominees who have made extraordinary contributions

to the university are welcomed, but they must also have made significant contributions beyond the university and its local region.

To secure a nomination form, go to [www.nicholls.edu/president](http://www.nicholls.edu/president). Nominations must be submitted by Friday, March 6. They will remain active for three years.

Return applications to Dr. Carroll Falcon, provost and vice president for academic affairs, P.O. Box 2002, Thibodaux, La., 70310 – or via campus mail.

Nominations should refer to the criteria set out in the honorary degree policy, stating clearly and concisely why the nominee is deserving of the award.

**Exhibition** takes place at the Ameen Art Gallery in Talbot Hall from March 24–April 3. The annual art show features works by Nicholls faculty and invited artists. The exhibit closes with a reception on Friday, April 3.

**Culinary Day**, slated for Friday, March 27, offers cooking demonstrations by faculty of the John Folse Culinary Institute. **Don Kasten**, instructor of culinary arts, presents the guiding principles of flambé

cooking; **George Kaslow**, assistant professor of culinary arts, presents a demonstration of Spanish cooking; and **Randy Cheramie**, associate dean, demonstrates the art of preparing a perfectly roasted chicken.

The **Musaica Chamber Ensemble** performs on Sunday, March 29, at St. John’s Episcopal Church in Thibodaux. Musaica is a group of professional musicians, most of whom play See **Jubilee**, page 7

**Reminder!**  
**Mardi Gras Breakfast at Night**  
**Wednesday, Feb. 18**  
**9 - 11 p.m.**

# Calendar of Events: Feb. 14 - 26, 2009

## Saturday, Feb. 14

- Softball vs. Lipscomb, Lafayette, 2 p.m.
- Men's Basketball vs. Southeastern Louisiana, Thibodaux, 3 p.m.
- Women's Basketball vs. Southeastern Louisiana, Hammond, 3 p.m.

## Sunday, Feb. 15

- Softball vs. Louisiana-Lafayette, Lafayette, 12:30 p.m.
- Softball vs. Louisiana Tech, Lafayette, 3 p.m.

## Wednesday, Feb. 18

- Mardi Gras Breakfast at Nite, Galliano Dining Hall, 9 p.m.

## Thursday, Feb. 19

- Men's Tennis vs. Louisiana-Lafayette, Thibodaux, 1:30 p.m.

## Friday, Feb. 20

- Baseball vs. Chicago State, Thibodaux, 6 p.m.

- Women's Track, SLC Championships, Houston, Texas.
- Dining Hall closes after noon meal.
- Residence halls close at 4:30 p.m.

## Saturday, Feb. 21

- Women's Basketball vs. Texas State, Thibodaux, 2 p.m.
- Baseball vs. Chicago State, Thibodaux, 3 p.m.
- Men's Basketball vs. Texas State, San Marcos, Texas, 4 p.m.

## Sunday, Feb. 22

- Men's Tennis vs. Texas-San Antonio, San Antonio, Texas, 10 a.m.
- Baseball vs. Chicago State, Thibodaux, 1 p.m.

## Monday, Feb. 23

- Men's Tennis vs. Incarnate Word, San Antonio, Texas, 10 a.m.
- University closed for Mardi Gras holidays.

## Tuesday, Feb. 24

- Baseball vs. Alabama, Tuscaloosa, Ala., 6:35 p.m.
- University closed for Mardi Gras holidays.

## Wednesday, Feb. 25

- Men's Tennis, Texas-Pan American, Edinburg, Texas, 1 p.m.
- Women's Basketball vs. Central Arkansas, Thibodaux, 6:30 p.m.
- Baseball vs. Alabama, Tuscaloosa, Ala., 6:35 p.m.
- Men's Basketball vs. Central Arkansas, Conway, Ark., 7 p.m.
- Ash Wednesday; no classes.

## Thursday, Feb. 26

- Classes resume.

For inclusion in the monthly calendar, e-mail complete event details to [graham.harvey@nicholls.edu](mailto:graham.harvey@nicholls.edu).

**SPA PRESENTS**  
**A FREE NIGHT AT THE MOVIES**  
 Come enjoy popcorn and the hottest movies of the year, not yet released in stores, but showing in Le Bijou at these set times! Don't miss out so mark your calendars today!

<p><b>TWILIGHT</b>          Showings:          Friday, Feb. 27          7 and 10 p.m.          and Sunday, March 1          7 p.m.</p>	<p><b>THE CURIOUS CASE OF BENJAMIN BUTTON</b>          Showings:          Wednesday, March 25          and Sunday, March 29          7 p.m.</p>	<p><b>PAUL BART - MALL COP</b>          Showings:          Wednesday, April 22          7 and 10 p.m.          and Sunday, April 26          7 p.m.</p>
--	---	---

# SPORTS

## Amid field improvements, Colonel softball starts season 3 - 2

For a college athlete, life on the road is never easy. But winning three out of the first five games helps. Nicholls softball coach Jenny Parsons's team finished a three-win weekend in the Centenary Softball tournament, behind the efforts of Southland Conference Pitcher of the Week Audrey Wood. With a 0.83 ERA and 23 strikeouts over 21 innings, Wood powered the Colonels to victories over Missouri State and Centenary.

"Audrey was great this weekend," Parsons said. "We've got 15 more games on the road before we get a home stand, and in order to get to where we want to be, we're going to need to get that kind of effort from everyone on the team."

The Colonels next hit the road for the 23rd Annual Louisiana



Pictured from left on the softball field are Kayla Watterson, freshman third baseman from New Iberia; Lyndsay Mesh, junior shortstop from Miami; and Jenny Parsons, softball coach. The field is currently undergoing renovations, including a new backstop.

Classic in Lafayette, slated for Feb. 13-17. Then it's back on the road to Hattiesburg, Miss, for the Southern

Miss Mizuno Classic, scheduled for Feb. 21-22.

"A 15-game road trip is a tough

way to start the season," Parsons said, "but it will make coming home that much sweeter."

When the softball team does get to play its first home game of the 2009 season, it will do so on a newly improved field. Resulting in part from damage from the hurricane season – as well as planned facility improvements – the softball field will have a new wind-screened fence, LED scoreboard, backstop, netting and infield sod.

"These improvements will make our home field one of the best in the conference, and we look forward to winning a bunch of games here," Parsons said.

She and her team will get their first chance at a home win on Mardi Gras Day, Tuesday, Feb. 24, when the Colonels host Southeastern.

### Jubilee, continued from page 5

with the Louisiana Philharmonic Orchestra or teach at Loyola University. Musaica received the "Best Chamber Music Concert" award for 2007 from Gambit magazine, and its program of great American chamber music was nominated as "Best Chamber Music Concert" for 2008.

The sixth annual **Jubilee Jambalaya Writers' Conference**, scheduled for Saturday, April 4, will take place at the Terrebonne Parish Library in Houma. Nicholls co-sponsors the conference with the Friends of Terrebonne Parish Public Library. This year's theme is "The Writer's Voice." Writers and readers join together in a wide-ranging discussion of the literary arts and the business of publish-



Chauvin Sculpture Garden – Kenny Hill, sculptor

ing, led by working authors, editors, agents and publishers. The keynote speaker is wildlife photographer **C.C. Lockwood**. Scheduled writers include: **Darrell Bourque, Woody Falgoux, Candice Proctor, Greg Langly, Susan Larsen, Dee Dee Thurston, Robin Wells** and **F. Paul Wilson**.

The **Chauvin Folk Art Festival**, scheduled for Sunday, April 19, takes place at the Nicholls Sculpture Garden and Folk Art Studio in Chauvin. It is a day-long event for the family with folk artists, live music, children's activities and food, highlighted by the age-old tradition of the blessing of the fleet on Bayou Petit Caillou.

For more information, call Ext. 4273.

### Guests Needed, continued from page 1

crisis, we need this avenue of communication now more than ever," Harvey said.

"It is important for the public to know how crucial our university is to the Bayou Region and the state of Louisiana. This television segment is an effective tool as we strive to maximize the positive, public image of Nicholls. I look forward to hearing from potential guests, and I offer a special thanks to those who have already appeared on our show."

Slots for the segment, airing live at 7:10 p.m. each Tuesday on the "Bayou Time" program, are available beginning Tuesday, March 10.

Anyone interested should respond with a full list of subjects he or she is willing and qualified to discuss. Most anything – whether academics, fund-raising, research, community service projects or student

life – is a valid topic of discussion. Student leaders are welcome to participate as well

Harvey said those who respond to the invitation are not committing to anything; they are simply letting him know that he can contact them at a later date to try to schedule an appearance.

### Solution to Jan. 28 Sudoku Puzzle

2	1	9	8	6	4	3	5	7
8	3	4	7	1	5	2	6	9
7	6	5	9	3	2	1	8	4
1	4	7	3	5	8	6	9	2
5	2	8	6	9	7	4	3	1
3	9	6	2	4	1	8	7	5
9	8	1	4	7	3	5	2	6
4	7	3	5	2	6	9	1	8
6	5	2	1	8	9	7	4	3

Puzzle by websudoku.com

# Inside Nicholls Items

An article titled "Teaching Literacy and Empathy: Students 'Reading' Katrina," by **Dr. Ellen Barker**, Belle and Leonard Toups endowed chair in English, will appear in the 2009 spring issue of English in Texas. Barker will also present a paper titled "Designing' a Feminist Rhetoric in Laredo: *La Cronica*, Moving from Definition to Self-Definition," at the College English Association's 2009 conference, slated for March 26-28.

The following faculty and staff members earned master advisor certification or re-certification during the fall 2008 semester: **Dr. Ellen Barker**, Belle and Leonard Toups endowed chair in English; **Gwendolyn Barrilleaux**, associate professor of nursing; **Brandi Crawford**, assistant professor of nursing; **Kimberly Dozar**, instructor of nursing; **Dr. Tim Durham**, assistant professor of biological sciences; **Dr. Pete Lewis**, assistant professor of nursing; **Dr. Shirleen Lewis-Trabeaux**, assistant professor of nursing; **Denise Mitchell**, assistant professor of nursing; **Michelle Patterson**, assistant professor of nursing; **Angie Pitre**, director of counseling and advising services at Fletcher Technical Community College; **Dr. Sonya Premeaux**, associate dean of the College of Business Administration and associate professor of management; **Dr. Lori Soule**, instructor of mathematics and computer science; **Wendy Toloudis**, administrative assistant 4 in academic affairs; and **Myra Vizier**, instructor of nursing.

Articles by two faculty members will appear in the winter 2009 issue of the Dietetic Educators of Practitioners publication. **Simone Camel**, assistant professor of dietetics and coordinator of the dietetics program, contributed "Developing Meaning-

ful Service-Learning Experiences in Dietetics Education," and **Brigett Scott**, assistant professor of dietetics and director of the dietetic internship program, contributed "What Do You Know About Service-Learning?"

**Dr. Deborah Cibelli**, professor of art, has been selected to serve as a reviewer for Choice: Current Reviews for Academic Libraries, a magazine published by the Association of College and Research Libraries.

**Dr. Paul Leslie**, professor of history, will lead a reading and discussion program – themed "Battleground Louisiana: Civil War Events and Experiences" – Thursdays from March 6 to April 9. As part of the St. John the Baptist Parish Library's Reading in Literature and Culture series, the sessions will begin at 1:30 p.m. and last about two hours. For additional information, call the library reference department at (985) 652-6857.

A paper titled "Does Administrative Location of an Academic Department Affect Educational Emphasis? The Case of Economics" – by **Dr. Shane Sanders**, assistant professor of economics – was recently accepted for publication in the Journal of Higher Education Policy and Management. The study tests whether the administrative location of a department influences educational emphasis.

**Dr. James Stewart**, head of the Department of Mass Communication, attended a meeting of the Association for Schools of Journalism and Mass Communication in Mexico City, conducted Jan. 29-31. As editor of Insights, the association's journal, he was awarded a travel stipend so he could learn about the increasing role of technology and the need for students to know about other cultures, especially those of Mexico and Latin America.



## Nicholls Trivia Teaser

In what year did Nicholls launch its first campus-wide intramural sports program?

Submit answers by e-mail to [graham.harvey@nicholls.edu](mailto:graham.harvey@nicholls.edu) or by telephone to Ext. 7059 by Tuesday, Feb. 17. Responders with the correct answer will be entered in a drawing for a gift certificate to be used at Sodexho's retail food vendors located on campus.

Congratulations to Mary DeLaune, administrative assistant 4 in records and registration. She was the winner of the Jan. 28 Trivia Teaser. John Swider of Cut Off was editor of LaPirogue in 1953.

## Feb. 13 Sudoku Puzzle

7		4	2		8		5	
5					1	3	7	
					7		4	8
	1		7	2				
		9				5		
			9	3			2	
4	5		1					
	8	1	4					5
	2		3		5	6		4

Answer to this issue's puzzle will be published in the next issue.

## Au revoir!

Nicholls bids farewell to the following employees – **Robert Borne**, horticultural attendant for grounds, who will retire March 14; and **Mark Bourgeois**, maintenance repairer 2 for operations and maintenance, who resigned Jan. 23.

"*Inside Nicholls State University*" is published by the Office of University Relations to inform university employees of administrative news, campus happenings, achievements and people associated with Nicholls State University. News items and calendar events should be sent via e-mail to [graham.harvey@nicholls.edu](mailto:graham.harvey@nicholls.edu), through campus mail to the Office of University Relations in 125 Elkins Hall or faxed to Ext. 4891. Contact the staff by telephone at Ext. 4143.

**Dr. Rebecca Pennington**, Assistant Vice President for Development and University Relations

**Renee Piper**, Director

**Tony Cook**, Assistant Director  
**Graham Harvey**, Editor  
**Misty McElroy**, Photojournalist  
**Debbie Kliebert**, Distribution

**Norby Chabert**, **Tony Cook**, **Dr. Al Delahaye**,  
**Dr. Ernest Ellender**, **Dr. Carroll Falcon**,  
 and **Renee Piper**, Contributing Writers  
**Linda Hymel**, Layout

Nicholls State University is a member of the University of Louisiana System.

Have some university-related news that you would like to share with other faculty and staff members?

Send it to "Inside Nicholls" at [graham.harvey@nicholls.edu](mailto:graham.harvey@nicholls.edu).