

# HOURS

**Archives & Special Collections** 8 a.m. - 4:30 p.m. [M, W-F]  
8 a.m. - 9 p.m. [Tues]

**Archives Annex** 7:30 a.m. - 4:30 p.m. [M-F]

**Director's Office** 7:30 a.m. - 4:30 p.m. [M-F]

**Ellender Lab** 7:45 a.m. - 11 p.m. [M-Th]  
7:45 a.m. - 4 p.m. [F]  
4 p.m. - 12 a.m. [Sun]

**Government Information** 8:00 a.m. - 4:30 p.m. [M-F]  
\* Access is available after department hours. Please see 2nd floor circulation staff for assistance.

**M.E.W Lab** 7:30 a.m. - 3:30 p.m. [M-Th]  
8 a.m. - 2 p.m. [F]

**Serials** 8:00 a.m. - 4:30 p.m. [M-F]  
\* Access is available after department hours. Please see 2nd floor circulation staff for assistance.

**Technical Services** 7:30 a.m. - 4:00 p.m. [M-F]

**Access Services  
(Circulation, Interlibrary Loan, and Reserves)**  
7:30 a.m. - 11:00 p.m. [M-Th]  
7:30 a.m. - 4:30 p.m. [F]  
3:00 p.m. - 11:00 p.m. [Sun]  
\*While classes are in session

## Contact Information:

Access Services (985) 448-4654

Archives (985) 448-4620

(985) 448-4621

Archives Annex (985) 448-4644

Director's Office (985) 448-4646

Ellender Lab (985) 448-4765

Fax (985) 448-4925

Government Info (985) 448-4667

MEW Lab (985) 448-2678

Musical Instruments (985) 448-4633

Research & Instruction (985) 448-4625

Serials (985) 448-4676

Technical Services (985) 448-4612

Address: Ellender Library  
Nicholls State University  
P.O. Box 2028  
Thibodaux, LA 70310

Website: <http://www.nicholls.edu/library/>

Ellender  
Memorial  
Library

Nicholls State University



Thibodaux, Louisiana

## First Floor

**Archives & Special Collections:** Includes university archives, regional and rare books, and special collections containing material on local history and culture [A] Exhibit Room [B] Reading Room-features Genealogy collection [C] Archives Annex- Includes Louisiana newspaper microfilm, a microfilm reader, and archival map collections. Also, a change machine and copier are located here.

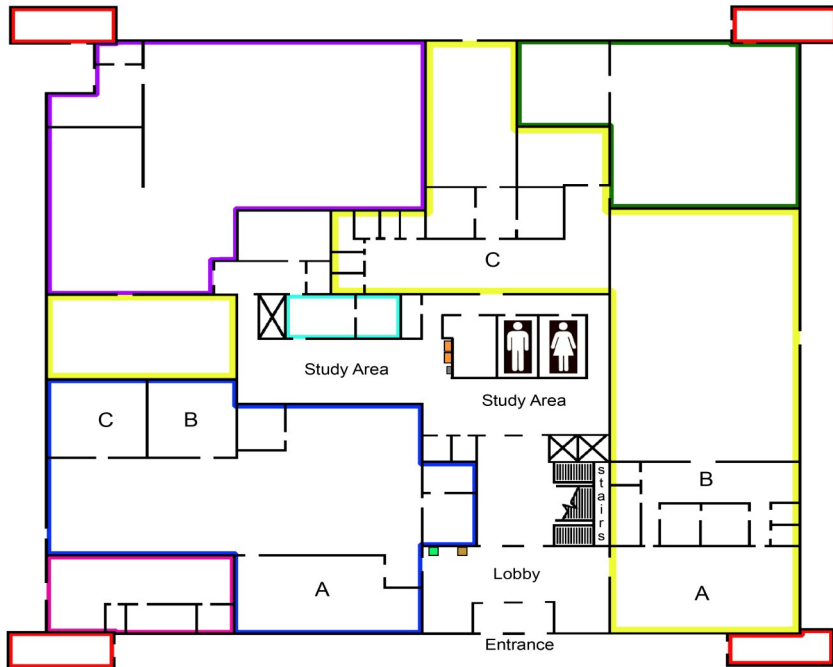
### Center for Bayou Studies

**Ellender Lab:** This is an open lab and currently houses Dell PCs and MACs. [A] Geomatics Lab [B] Dell Lab [C] MAC Lab. This lab is not affiliated with the library or its staff.

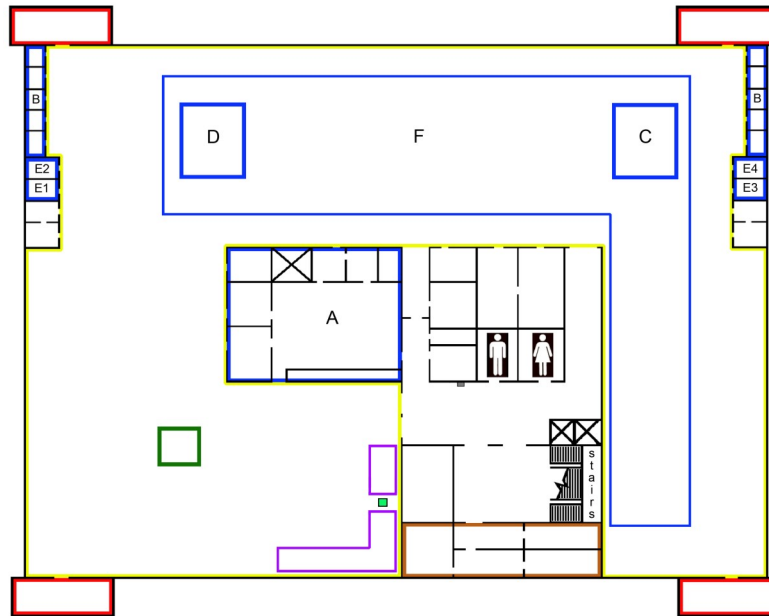
**MEW lab:** Mathematics Enrichment Workplace is a computer lab for students completing course work in math. This lab is not affiliated with the library or its staff.

**Technical Services:** Designated a “staff only” area. Includes Acquisitions, Cataloging, and Systems IT.

### Louisiana Center for Women in Government & Business



## Second Floor



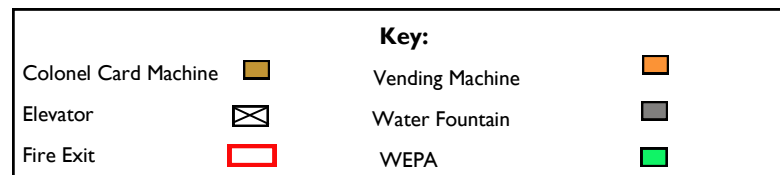
**Access Services:** The first point of contact for most users. [A] Circulation, Gifts & Exchange, Interlibrary Loan, Reserves - checkout books, study rooms, anatomical models, reserved items for class, fax, scan, and ask general questions. [B] Carrels: Faculty and Student - For individual use only. [C] Children and Juvenile Books [D] Reference Books - Non-circulating. For use only on this floor. [E] Study Rooms - For groups of 3-10. Rooms are not soundproof, so users must be considerate of other library patrons. [F] Quiet Study Area

**Computers:** There are 29 computers available for public use.

**Director's Office:** Administrative center of the library, as well as where the director primarily resides.

**Research and Instruction:** The Reference Desk always has a librarian available to assist anyone with information needs.

**Stacks:** The library's general collection. Available for checkout to faculty, students, staff, retirees, and Courtesy Card holders.



## Third Floor

**Government Information:** Federal and state information in a variety of formats including paper, microform, maps, CDs, kits, and online documents. [A] Federal [B] Louisiana [C] Map Room

### Assessment & Institutional Research

**Multipurpose Room:** A space dedicated for presentations and meetings. Appointments for use of this room can be made through the director's office. Presentation equipment can be provided upon request.

**Musical Instruments Collection:** Includes a variety of instruments: keyboard/rhythm, string, wind, and ethnic. These can be viewed by appointment only.

**Serials:** Includes bound volumes, loose issues, and microform of magazines and scholarly journals. Out-of-state newspapers on microfilm include *New York Times* and *Wall Street Journal*. There are 3 public computers, a copier, microfilm reader and scanner. This large space is great for quiet study.

